



SIPARILA

TREND REPORT 2020



The Interior Design Trends 2020

The interior design trends of 2020 emphasize on closeness to the earth, humanity, personality and the growth in demand for natural materials. Wood shades are combined in a relaxed way and the different shades are used to make the space more layered and interesting. Alongside the light wood tones, darker wood varieties will emerge in honor of the new decade. The bold interior designer will get excited about the rich chocolate tones and tint the wood surfaces of his home dark.

Natural materials are strongly visible in interior design choices and wood also occupies wall surfaces. Instead of an impressive wallpaper, a panel can be chosen for the wall that is the center of the home. Depending on the space, the feature wall can be paneled vertically, horizontally or even in a herringbone pattern.

In the kitchens and utility rooms, natural wood makes a strong comeback and a novelty is the paneling of the kitchen. Wood is inspirational and alluring. The versatility of wood allows for creativity and new interior design ideas.

FRESHNESS OF THE SPRING

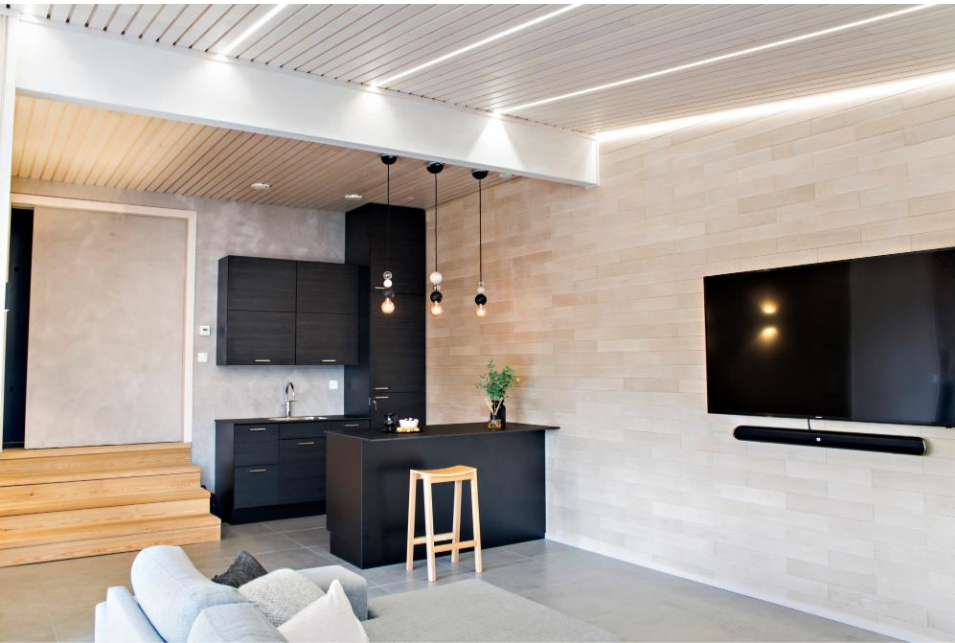
- The new decade brings freshness and warmth to decoration.
- The color trends include beautiful pastel shades such as light yellow, light blue and soft peach shades.
- In the interior design it is allowed to reflect the lived life and layers. By combining the new and the old, you create depth in the interior.
- Wall panels are becoming more popular, bringing coziness and interest to the space.





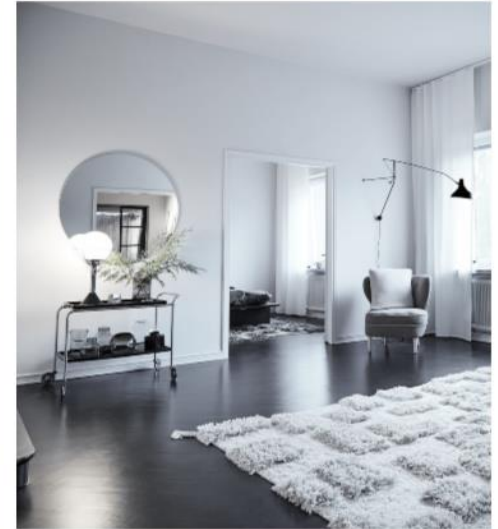
LET THE NATURE EMBRACE YOU

- Earthy tones create softness in the space. Real wood surfaces with interesting details create lights and shadows.
- The cheerful spring effect colors give the interior character, and the bravest designers blend even the opposite colors together. The use of colors is inspired by elements familiar from nature; sun, sand, water, flowers and sun-ripened fruits and berries.
- Nature is strongly present in the interior design. The grain pattern of wood is allowed to stay visible and the natural vitality of the surfaces is a desirable element.



RETURN OF THE SPICY DARK WOOD TONES

- Dark wood tones make a spectacular comeback in honor of the new decade.
- Coffee and chocolate toned wooden surfaces make a strong impression. Lighten the mood with sand, beige and off-white.
- If you want to add some Scandinavian touch, spice up the décor with light green eucalyptus branches, aerial plants and light grasses.



*Photos by Anno Collection

LIGHT SCANDINAVIAN TONES

- Harmonize the cold tones of the decoration and warm honey coloured wood with the help of textiles.
- Layer the interior design by adding structured materials such as soft textiles, shiny metal and sturdy iron alongside natural wooden surfaces.
- There can be plenty of textiles. Natural materials like linen, cotton, silk, jute and diverse knit patterns are popular.
- The Scandinavian down-to-earth color palette holds its own place. The atmosphere of the space, decorated in light tones, is easy to spice up with delicious trendy colors. Contrast the interior design with a touch of graphite gray or black.



SUSTAINABLE LIVING

- Being ecological and timelessness are the themes of the new decade. The trendy elements of the interior design gather around these themes.
- Finnish building traditions with the wood are given new perspective in the hands of Finnish designers. Wood is honored as it is.
- The spirit of recycling is highly reflected in interior design trends. By combining the new and the old, you get vitality to the decoration.



PALA - interior panel

The modern PALA panel, made of birch, is a completely new type of interior panel. Use PALA panels to create your own interior features. The lightweight paneling is easy to install and can be used to create geometrical designs. The PALA paneling is installed using glue, no nails or hammering is required.

PALA - panel tones

- Heat-treated birch: the honey tone is a sensual and cozy choice.
- Translucent birch: Scandinavian vanilla tone, a timeless classic.

INTERIOR DESIGN IDEA:

The wall paneling placed in a herringbone pattern is an eye-catcher, especially in the living rooms and bedrooms. The wall panel also works great as a headboard and complements the interior design in small bedrooms.





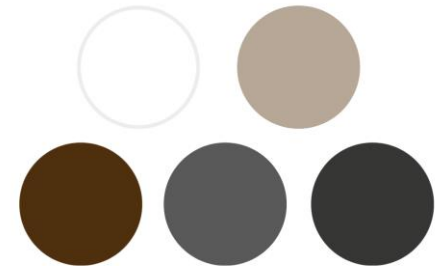
SIPARILA
STRUKTUURI

STRUKTUURI - interior panel

The STRUKTUURI panel is an excellent option for decorating the ceiling and wall surfaces of a home. The concealed shape of the panels leave the nails hidden and you can also use STRUKTUURI panels in your home's wet spaces and sauna.

STRUKTUURI tones

- White
- Translucent sand
- Pearly brown
- Pearly grey
- Translucent black



INTERIOR DESIGN IDEA:

STRUKTUURI is particularly impressive as a large surface. Create different moods by combining dark and light shades, as well as different materials in parallel - cork, linen, wool and glass.

VIRE - interior panel

The three-dimensional, wavy surface of the VIRE interior panel designed by Ristomatti Ratia changes shape depending on the viewing direction.

The VIRE panel can be used as both a wall panel and a ceiling panel and can be installed horizontally or vertically. The finished surface treatment of the VIRE panel speeds up the interior design of the home and the three-dimensional shape allows you to play with light and shadows.

VIRE is available in translucent sand, white and black tones, as well as in hardwood shades of birch and ash in translucent white.

INTERIOR DESIGN IDEA:

The sleek VIRE interior panel is a trendy choice for home spaces. Its vibrant and acoustically enhancing design maximizes comfort and creates an atmosphere for even a simpler interior design.





SIPARILA
KOO

KOO – interior panels

The KOO interior panelling uses the beauty of solid wood to make time itself stand still. The carefully-crafted design brings together three different elements to form a single harmonious finish. KOO panels can be used on their own or in combination to create to look you want.

KOO panels are designed by interior architect Kari Lappalainen. Panels are available in translucent birch and translucent grey on pine wood.

INTERIOR DESIGN IDEA:

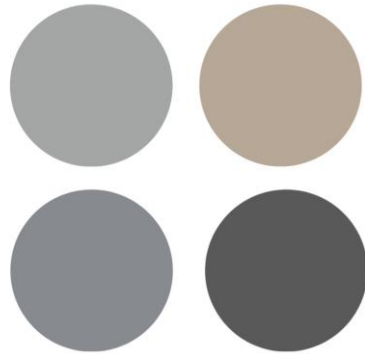
KOO interior panels are at their best alongside hard and glossy surface materials. A beautiful contrast is created by combining a vibrant wood panel with a clinical wall and floor tile.

USVA – interior panel

The surface of the USVA interior panel lives with the light. The clear-lined, straight shapes and micro-textured finish highlights the wood's natural grain and complements the iridescent metallic sheen. The panel is a great eye-catcher, especially for simplified spaces.

USVA tones

- Pearly pearl
- Pearly silver
- Pearly grey
- Translucent sand



INTERIOR DESIGN IDEA:

The pearly nuance of the USVA interior panel makes the interior more spectacular. Create personality and harmony by combining this panel with some patterned wallpaper or a colorful rug.





SIPARILA

KIILLE

KIILLE – interior panels

The KIILLE interior panels suit perfectly for walls and ceilings in dry spaces.

- The straight-edged STS is a timeless panel with a beautiful, glossy white surface that adds space and light to the room.
- The pearl panel, which represents traditional décor, supports a very rustic romantic atmosphere.

INTERIOR DESIGN IDEA:

Natural wood tones captivate the interior, but white still holds its place. In the dark North, white ceiling and wall paneling adds brightness and refreshes the overall look of the interior. With indirect lighting, you can create different atmosphere in your home and the white surfaces reflect light beautifully over a wide area.

AITO – interior plate

The straight-edged and modern interior plate is like a painting, starring the natural beauty of wood. AITO interior plate is available in 280 mm width. The panels are end matched and come with a concealed fixing system. The finished surfaces are completely smooth and nail free.

AITO – plates are available in white and anthracite tones.

INTERIOR DESIGN IDEA:

The AITO interior plate is suitable for emphasizing both large surfaces and smaller details. The atmospheric wider interior plate soothes the space and is suitable for a variety of interior styles, from a country-inspired bar kitchen to a minimalist white Scandinavian home.



SIPARILA
AITO





SIPARILA

RAILO

RAILO – interior panel

The RAILO interior panel is great for walls and ceilings. It creates a fresh and airy slatted look. The RAILO interior panel is also suitable for the ceilings of damp rooms, such as shower rooms, thanks to its splash protection.

*the honey-colored RAILO interior panel in the lowest picture is toned according to the customer's wishes.

INTERIOR DESIGN IDEA:

RAILO interior panel lends itself to a number of styles and is ideal choice for both contemporary and classic spaces.

You can also create a funk-style ensemble inspired by Alvar Aalto with vertical paneling of the whole wall.



VALO – interior panel

In the design of the VALO interior panels, designed by Heli Mäkiranta, special attention has been paid to the lighting of the space. The open seam between the panels is designed so that it is possible to hide a LED strip between the panels.

VALO interior panels are available in white pine and pearly birch.

INTERIOR DESIGN TIP:

The VALO interior panel enables the lighting of rooms in a modern way. With the help of a dimmer, the light output and brightness of the LED strips embedded in the panel seams can be adjusted. In this way it is possible to create the desired atmosphere in the space, from general lighting to a relaxing one - everyday luxury!



SUSTAINABLE, HEALTHY HOME

The most significant factor when creating a comfortable home, is the optimization of the facilities for the needs of the residents. We want to bring quality materials, durable surfaces and functionality to homes.

Wood is a natural material, which ages beautifully and with dignified patination. As a material, wood is environmentally friendly, renewable and recyclable. It is also an efficient carbon sink: a wooden detached house stores 30 tons of carbon, equivalent to 10 years of driving for one family.



At Siparila, we want to strengthen the construction culture that respects the vitality of forests and promotes sustainable and healthy living.

LEARN MORE

SIPARILA.FI