

PRODUCT DATASHEET

SIPARILA OY

▶ PLATTA

FULLY FINISHED FAÇADE ELEMENT

PLATTA façade elements allow you to create versatile, nail-free finishes that are quick and straightforward to install. The design of the elements enables hidden fastening creating a smooth façade.

PLATTA façade elements are available in three different sizes, which saves unnecessary sawing and enables complex wall surfaces. End-matched elements allow for flexible joint placement and decrease the material loss by 5 to 10%.

PLATTA façade elements are produced on request and available in all exterior paint colors.

PROFILE

PLATTA

Suitable for horizontal and vertical installation



The natural moisture-related wood movement is taken into account in the design of the PLATTA façade elements. The profile allows wood to expand and contract without any structural damage.

PLATTA façade elements are available in three different sizes.

SURFACE TREATMENT

PLATTA façade elements are fully finished in dry and standardized factory conditions, which guarantees the wood a best possible protection against weather, damp and UV-damage. The elements are first primed on all four sides within 60 hours of planing and then coated on three sides after drying. Also tongues and grooves of the elements are painted to ensure the durability of façade. The amounts of paint used comply with the requirements of RT information sheet 21-11212.

PLATTA façade elements are also available in fire-retardant coating.

DIMENSIONS

Thickness	Width	Length	Effective Width
mm	mm	mm	mm
20	615	1086	595
20	615	1630	595
20	615	3260	595

PLATTA façade elements are end matched. They can be installed both vertically and horizontally.

PLATTA façade elements are produced from AB-quality, three-layer spruce slabs. The material is dried 14 ±2%. The outer surface of PLATTA façade elements is entirely sanded, providing them with excellent paint adhesion properties. The façade elements are end matched and they can be installed vertically and horizontally. PLATTA elements come in three different lengths, which saves unnecessary sawing and makes construction more effective.

LONG MAINTENANCE PERIOD

The maintenance period of the fully finished PLATTA façade elements depends on the eave height and the shape and orientation of the building. The hard paint film of the elements protects the wood against UV radiation and the wearing effects of moisture. The PLATTA façade is easy to clean as the sanded surface of the element rejects street dust and air pollutants. The maintenance period of the panels is 10 years.

QUALITY SPECIFICATIONS

Surface	Sanded surface
Checks	Individual hairline checks and splits are permitted. Checks through the piece are not permitted
Insect damages	Not permitted
Bark pocket	Individual, small occurrences permitted in each batch
Rot	Not permitted
Reaction wood	Permitted only insofar as it does not hinder the fastening of the cladding
End matching	Individual, lower quality end matches are permitted in no more than 5% of each delivery for example skewed angles, tears, etc.
Knot splits	Individual knot splits up to 10 mm are permitted
Knot holes	Not permitted
Knots	Knots are permitted. Knots must be primarily solid
Repairs	Not permitted
Resin pockets	Only permitted in small numbers. Through resin pockets are not permitted
Blue staining	Not permitted
Heart wood	Heartwood streaks of up to half of the length of the panel are permitted.
Discolouration	Not permitted
Paints	The primer is a water-borne, oxidative-curing alkyd primer that contains wood protective liquid. The topcoat is a water-borne acrylate-based semigloss exterior paint with excellent weather resistance.
Amount of paint	The amount of paint used in this industrially surface-treated cladding panel complies with the requirements of RT information sheet 21-11212.

The sizes and numbers of defects permitted in the lowest-quality 1-metre-long part of a piece are presented in the table above.

PACKAGING

PLATTA façade elements packaging protects the elements from moisture and dirt during transportation. On construction site façade elements must be covered well from each side. Elements must be protected against direct sunlight, burning heat and moisture.

PRODUCT LIABILITY

The manufacturer of PLATTA façade elements is liable for its products in accordance with the Product Liability Act. Each delivery batch is permitted to contain no more than 5% of lower grade products. Delivery quantities may differ from the ordered quantity by ±5%.

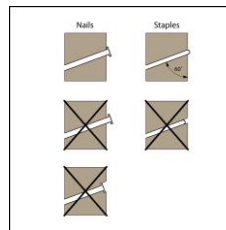
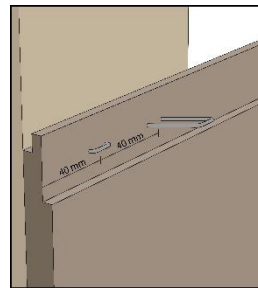
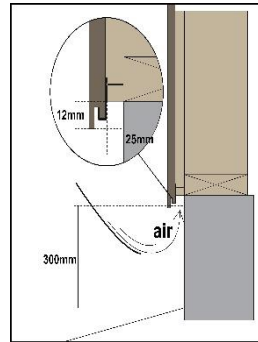
MAINTENANCE

Product maintenance instructions are available at www.siparila.fi

SIPARILA

INSTALLATION AND HIDDEN FASTENING

PLATTA façade elements tongue and groove system enable invisible fastenings and flexible joint placement. The elements are fastened with staples.



PLATTA façade elements are delivered ready to use. Ensure that the product is not dirtied or dented during installation. Installing a defective product is prohibited.

The façade elements must be stored on a flat surface and covered well from each side. Wood must be shielded from direct sunlight, burning heat and moisture. The façade elements must be stored at least 10 cm from the ground to allow free air circulation.

Elements are fastened to furring strips. We recommend using furring strips that are at least 25 mm thick and 100 mm wide. The bottom/front edge of the first element is fastened with a starting hook. Attach the starting hooks to the furring strips 600 mm apart using hot-galvanised nails or screws.

Attach the elements to the furring strips by driving two staples every 600 mm through the center of the tongue. Staples should be 40 mm apart from each other. Also attach the staples to at least 40 mm from the end of the element to avoid cracking.

We recommend attaching the elements with stainless-steel staples 1.6x11x50 mm. Leave the crowns of the staples on panel surface level. Fasten the panels tightly against one another. Make sure that the tongues are pressed all the way to the bottom.

PLATTA façade element installation instructions can be found at: www.siparila.fi.

INTERNAL QUALITY CONTROL

The manufacturer carries out internal quality control in accordance with the FPC manual

TRANSPORTATION AND STORAGE

PLATTA façade elements must be transported and stored dry and protected from water. Please ensure sufficient ventilation. The wood must not touch the ground during storage. A maximum of 2 PLATTA façade element packets can be stored on top of the other.

ENVIRONMENT

The product is made of PEFC certified wood and coated with water-borne paints. Leftover pieces can be disposed of by burning or as domestic waste.



www.siparila.fi